



Solaris 44#20 NEW



Year:	2014
Current Price:	€ 480.000 Vat not paid
Located in:	Cantiere SE.RI.GI, Aquileia (I)

New. Never launched. Düsseldorf 2014 show yacht. Teak interior. Viewing at our yard in Aquileia, Italy. Ready for immediate delivery.



Specs, Equipment and Information

GENERAL

Yard	Solaris Yachts / Cantiere Se.Ri.Gi
Designer	Javier Soto Acebal / Solaris Yachts
Hull Material	GRP/Sandwich Vacuum infusion
Type of Yacht	Cruiser Racer

DIMENSIONS

Loa	13.60m
Beam	4.18m
Max. draft	2.40m
Dry weight	9.800

RIG

Model	Sparcraft mast, aluminium with 2-spreaders, ready for fully batten mainsail
-------	---

SAILS

1 main sail from One Sails, 4T forte
1 genua from One Sails, 4T forte

ENGINES

Engine	Volvo 75HP, 55kW, D2 -75
Type	Diesel
Drive	Sail drive
Propellor	Gori Prop folding
Engine hours	NEW

TANKS

Fresh water	420 L
Fuel	260 L
Holding tanks	Available

CERTIFICATION

CE Rina	Class A, Ocean
---------	----------------

ACCOMODATIONS

Fit out	Interior in Burma Teak wood
---------	-----------------------------



Cabins	1 Owner cabin and 2 guest cabins
Berth	3 double, sleeps 6, excl. salon
Galley	2 Fridges (1 switchable to freezer unit), 3 Burner Gas cooker and Oven, Work tops in Corian
Heads	2 with separate shower cubicle in owner cabin
Toilets	1 x electric Tecma Elegance in Owner cabin fwd 1 manual Jabsco aft
Saloon	Drop-leaf table in the saloon in teak

HULL AND DECK

Full teak deck, included on side deck, coach roof, cockpit and bathing platform with grey caulking
White top sides with grey bootop line and waterline
Flush deck hatches, Solimar
Electric hydraulic folding bathing platform with bathing ladder
2 x additional opening portholes into cockpit for aft cabins
Additional deck hatch in salon
1 electric Harken winch for halyard
Sprayhood
Bimini for guest cockpit
Cockpit table
Lazy jack
2 larger 50. 2 Harken winches for genoa
Folding cleats, stainless steel
Grabrails at companion way
Adjustable sheet cars from cockpit
Staysail equipment

ELECTRICAL INSTALLATION

12V Gel AMG service batteries approx. 525 Ah at 12 V
2 x 55 Ah engine start batteries
LED Navigation lights
LED interior lighting
Indirect floor lighting
Sockets in all cabins and bathrooms
Electric inflator pump for dinghy
Battery charger 12V /80 A

ELECTRONICS AND NAVIGATION

B&G package H 3000 with 1 x H300 GFD, 1 GPD H3000 Pilot (at port pedestal) ACP1, RAMT2 12V, Wind indicator 360 Degree, VHF RS35 with external station

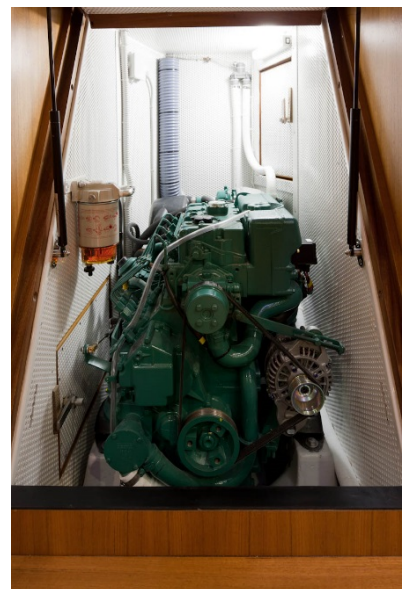


B&G H 300 GFD extra display at companionway
B&G T8 Touch Multi Display 8" needs external charts, installed at cockpit table
Radio CD player with speakers in cockpit

ADDITIONAL EQUIPMENT

Max power bow thruster VIP 150
Shower with warm and cold water and separate discharge pump in bathroom
Webasto heating system Airtop 5000ST with 3 fan coils





Images sister ship



Images sister ship

Disclaimer:

All data considered correct but not guaranteed. This document is not contractual. The Company offers the details of this vessel in good faith but cannot guarantee or warrant the accuracy of this information nor warrant the condition of the vessel. A buyer should instruct his agents, or his surveyors, to investigate such details as the buyer desires validated. This vessel is offered subject to prior sale, price change, or withdrawal without notice.

SOLARIS YACHTS CUSTOM

Ipswich Haven Marina, New Cut East

Ipswich IP3 0EA England

www.luxury-marine.com

www.solarisyachts.com

ben.vaes@sycustom.com

+44 7740 10 25 58

