



Solaris 58#05 NEW



Year:	New – under construction
Delivery :	June 2015 in Aquileia or Varazze (Italy)
Price :	1,236,170 € excl. Vat.
Located in :	Cantiere SE.RI.GI, Aquileia (Italy)
Flag :	To Owners choice

**Under construction. Interior in white American oak, incl. North 3DL, B&G-Electronic, air-conditioning and heating system with 7 kW Generator.
Delivery for June 2015.**



Specification, equipment and information

GENERAL

YARD	Solaris Yachts / Cantiere SE.RI.GI
DESIGNER	Javier Soto Acebal / Solaris Yachts
HULL MATERIAL	GRP sandwich construction in vacuum infusion
TYPE OF YACHT	Cruiser-Racer

DIMENSIONS

LOA	17,45 m
WIDTH	5,05 m
DRAFT	2,85m
DISPLACEMENT	19,500 kg

ISPARS

Aluminium 3 spreaders
Harken track with switch system for fully batten main sail
Additional Stoppers
Lazy Jack
Furlex TD manual jib furler

SAILS

North 3DL main sail, jib and asymmetric

ENGINE

MODEL	Volvo D3,110 HP, 81kW.
TYPE	Diesel
DRIVE	Shaft with bronze P-bracket
PROPELLER	Flex o Fold - Folding prop

GENERATOR

MODEL	Generator, 7 kW - Köhler 7EKOZD, 1500 RPM -at 230V AC
-------	---

TANKAGE

DIESEL	500 l
FRESH WATER	600 l
HOLDING TANKS	3 x for toilet

CERTIFICAT

CE RINA	OCEAN, CLASS - A
---------	------------------

ACCOMODATION

FIT OUT	Interior in Oak with galley and bathroom work tops in wood
CABINS	1 owner cabin forward, 2 guest cabins aft and a crew cabin in the peak
BERTH	3x2 total 6 persons excl. saloon, plus 1 x crew cabin
GALLEY	Stainless steel 3 burner stove and oven, gimballed incl. brackets Double stainless steel sinks Stainless steel Extractor Hood
BATHROOMS	3 x with separate shower cubicles
HEADS	3 x electric type Tecma or Planus 24 V , 1 manual toilet in cabin
SALON	Large settee with table to port and a U-shape settee with quarter berth to SB



HULL AND DECK

Deck in Teak
4 electric Harken Performa-winches for halyards and sheet
2 additional opening port lights for aft cabins into cockpit
Bronze sea cocks bronze nickel plates flush fitted
Bimini over guest cockpit
Sprayhood
Flush fitted hatches with Ocean Air sun blinds and mosquito screens
4 winches with halyard and sheets lead aft underdeck
4 stainless steel folding cleats
Folding cockpit table in Teak with stainless steel frame
2 fixed panoramic-hull windows in saloon with tempered double safety glass
4 fixed panoramic-hull windows with tempered double safety glass (in the owner and guest cabins)
Antifouling (Veneziani - Raffaello grey)
Cockpit boom light

ELECTRICAL INSTALLATION

24V /420 Ah service batteries and 12V /110 Ah start batteries
Additional 75 Ah, 12V battery for engine start
Additional 115 Ah service battery
Charger Mastervolt 110Ah/24V
Inverter Mastervolt 24 V /2500 W
LED navigation lights
LED-interior lights
Indirect floor lighting
AC sockets in all cabins and bathrooms

ELECTRONICS AND NAVIGATION

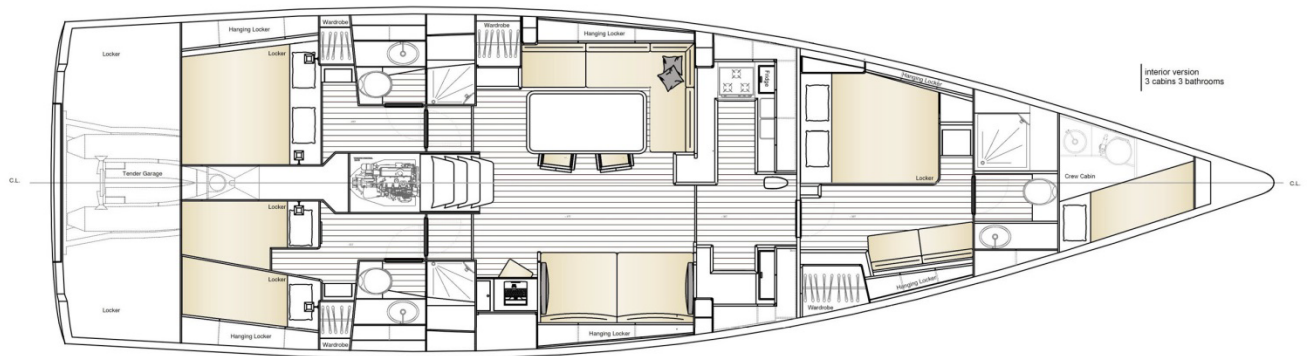
Electronic package: B&G Triton with 4x T41 Multi-Displays, Triton autopilot and AC42 drive -RAM T3 24V, VHF V50 with external station H50
B&G Multi-Display model Zeus EVO2 7 Touch with integrated GPS. Compatible with Navionics und C-MAP-N (charts not included)
Flat TV in the saloon to port with Glomex antenna in the mast

ZADDITIONAL EQUIPMENT

VECO air-conditioning and heating for owner cabin, saloon and both aft cabins
Bow thruster retractable VIP 150 24 V with cockpit control
Tender garage with longitudinal access way with a watertight composite compartment including electric winch, rollers to lift and drop the 2.8m rib.
Gravity discharging black water tanks

SAFETY

Automatic engine room fire extinguisher system
Liferaft stowage bin







Images sister ship



Disclaimer:

All data considered correct but not guaranteed. This document is not contractual. The Company offers the details of this vessel in good faith but cannot guarantee or warrant the accuracy of this information nor warrant the condition of the vessel. A buyer should instruct his agents, or his surveyors, to investigate such details as the buyer desires validated. This vessel is offered subject to prior sale, price change, or withdrawal without notice.

SOLARIS YACHTS CUSTOM

Ipswich Haven Marina, New Cut East

Ipswich IP3 0EA England

www.luxury-marine.com

www.solarisyachts.com

ben.vaes@sycustom.com

+44 7740 10 25 58